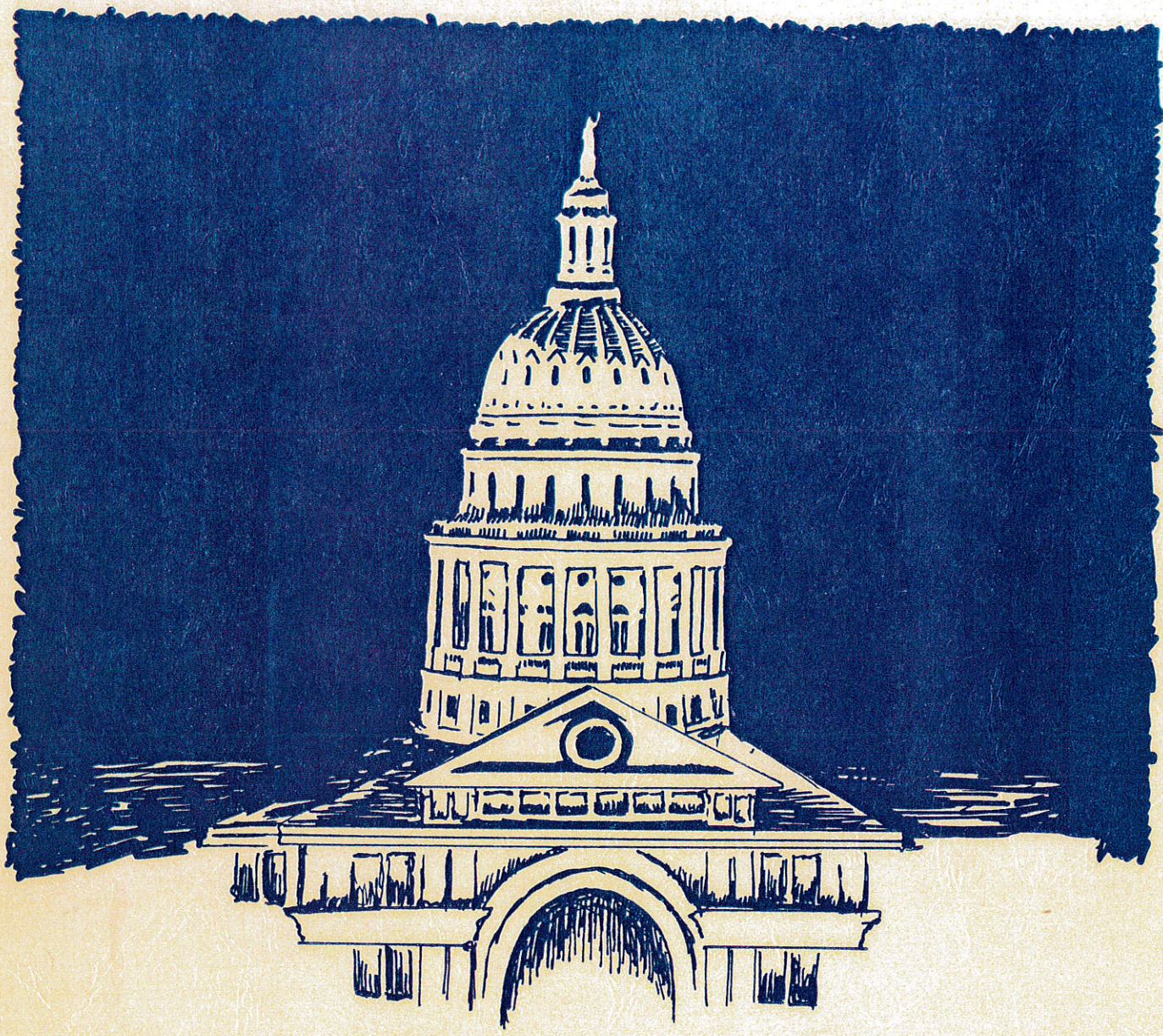


Houston Geological Society ★ *Lafayette Geological Society* ★ *Austin Geological Society*

★ *Alabama Geological Society* ★ *Corpus Christi Geological Society* ★ *East Texas Geological Society*

★ *Mississippi Geological Society* ★ *New Orleans Geological Society* ★ *Shreveport Geological Society*



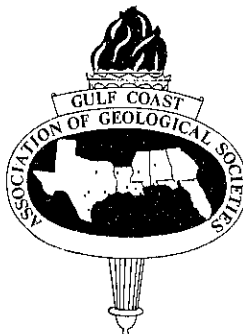
Gulf Coast Association of Geological Societies
27th Annual Meeting

Austin, Texas October 26, 27, 28, 1977

★ *South Texas Geological Society* ★ *Southeastern Geological Society* ★

**TRANSACTIONS
GULF COAST ASSOCIATION OF GEOLOGICAL SOCIETIES**

A SECTION OF THE AMERICAN ASSOCIATION OF PETROLEUM GEOLOGISTS



VOLUME XXVII, 1977

**Mary Pieper
Editor**

**PREPARED FOR THE
Twenty-Seventh Annual Meeting of the
Gulf Coast Association of Geological Societies
AAPG REGIONAL MEETING**

AND

**GULF COAST SECTION OF THE
SOCIETY OF ECONOMIC PALEONTOLOGISTS AND
MINERALOGISTS**

**Samuel P. Ellison, Jr.
SEPM Editor**

**CRETACEOUS CARBONATES OF TEXAS AND MEXICO:
APPLICATIONS TO SUBSURFACE EXPLORATION
(ABSTRACTS)**

**D. G. Bebout and R. G. Loucks
Editors**

**OCTOBER 26, 27, 28, 1977
AUSTIN, TEXAS**

**Published at
Austin, Texas**

*Copyright 1977 by the Gulf Coast Association of Geological Societies
No reproduction without permission of the President of the GCAGS*

**DEDICATION OF THE 1977
GCAGS TRANSACTIONS VOLUME
TO**



**DAVID EDWARD FRAZIER
(1931-1976)**

David Edward Frazier died on August 13, 1976, at the age of 45, in Houston, Texas. Dave was born and raised in Meriden, Connecticut. He attended undergraduate school at Tufts University where he received his bachelor's degree in geology in 1953. He worked as a marine geologist at the Narragansett Marine Laboratory, Rhode Island, for several years before attending graduate school at Texas A&M. Dave received his master's degree from A&M in 1960; his thesis was entitled "Sedimentary Parameters in Lower Barataria Bay, Louisiana."

On completion of his master's degree Dave accepted employment as a research geologist with Exxon Production Research Company (then Humble Research). At Exxon, under the direction of H. N. Fisk, his efforts were focused on detailed studies of Holocene deltaic and fluvial depositional processes, environments, and facies. His expertise was repeatedly called on by the company in applying his knowledge of Holocene systems to the search in ancient deltas for oil and gas.

Outside of the Exxon Company Dave is best known for his several publications dealing with the Mississippi Delta, Mississippi River point bars, and peat accumulation. His most recent publication "Depositional-Episodes: their relationship to the Quaternary stratigraphic framework in the northwestern portion of the Gulf basin", published by the University of Texas Bureau of Economic Geology, is already a classic paper. At the University of Texas, however, Dave is most remembered by students, faculty, and Bureau staff through his many visits which were the result of his serving as a member of doctoral and masters committees. During these visits his schedule was filled by conferences with graduate students seeking his expert advice on their research projects.

Dave will be missed by his many friends and professional associates.

TABLE OF CONTENTS

	Page
TITLE PAGE	I
DEDICATION TO DAVID E. FRAZIER	II
OFFICERS AND EXECUTIVE COMMITTEE, GCAGS	IX
OFFICERS OF MEMBER SOCIETIES, GCAGS	IX
REPORT OF PRESIDENT, GCAGS, Robert E. Boyer	XI
REPORT OF GENERAL CHAIRMAN, E. G. Wermund	XII
REPORT OF EDITOR, GCAGS, Mary Pieper	XIII
ORGANIZATION, TWENTY-SEVENTH ANNUAL MEETING	XIV
BEST PAPER AWARDS, GCAGS TWENTY-SIXTH ANNUAL MEETING	XV
PAST OFFICERS AND CONVENTION CHAIRMEN, GCAGS	XVIII
OFFICERS AND BUSINESS REPRESENTATIVES, GCS-SEPM	XIX
REPORT OF THE PRESIDENT, GCS-SEPM	XXI
HONORARY MEMBERSHIP, GULF COAST SECTION-SEPM TO DORIS M. CURTIS	XXII
BEST PAPER AWARDS, GCS-SEPM, TWENTY-SIXTH ANNUAL MEETING	XXIV
CONSTITUTION AND BY-LAWS, GCAGS	XXVII
PUBLICATIONS OF GCAGS	XXIX
PUBLICATIONS OF GCS-SEPM	XXX
ADVERTISERS INDEX	448

TECHNICAL PAPERS AND ABSTRACTS GCAGS

UNCONFORMITIES—NEGLECTED OIL FINDERS' TOOL by James A. Baird	1
CHARACTERISTICS OF WILCOX GAS RESERVOIRS, NORTHEAST THOMPSONVILLE FIELD, JIM HOGG AND WEBB COUNTIES, TEXAS by Robert R. Berg and Frederick J. Tedford	6
SHALE DIAPIR EMPLACEMENT IN SOUTH TEXAS: LAWARD AND SHERRIFF EXAMPLES by R. S. Bishop	20
URANIUM FAVORABILITY BY LITHOFACIES ANALYSIS, OAKVILLE AND GOLIAD FORMATIONS, SOUTH TEXAS by Larry D. Brogdon, Charles A. Jones, and John V. Quick	32
CRITICAL WATER ESTIMATES FOR GULF COAST SANDS by Raymond J. Granberry and Dare K. Keelan	41
THE JFS FIELD, DIMMIT COUNTY, TEXAS: SOME UNIQUE ASPECTS OF EDWARDS —MCKNIGHT DIAGENESIS by Alonzo D. Jacka and Jack C. Stevenson	45
SLICE TECHNIQUE APPLIED TO URANIUM FAVORABILITY IN UPPERMOST TERTIARY OF EAST TEXAS AND WEST LOUISIANA by Leslie Jones	61
APPLICATION OF THE TEXAS LAND RESOURCES MAP (Short Note) by R. S. Kier, L. E. Garner, and L. F. Brown, Jr.	69

HYDROGEOLOGY OF GULF COAST AQUIFERS, HOUSTON-GALVESTON AREA, TEXAS by C. W. Kreidler, E. Guevera, G. Granata, and D. McKalips	72
STRATIGRAPHY AND ENTRAPMENT OF HYDROCARBONS IN THE SAN MIGUEL SANDS OF SOUTHWEST TEXAS by James O. Lewis	90
SECONDARY POROSITY DEVELOPMENT AND SUBSEQUENT REDUCTION, OVERPRESSURED FRIO FORMATION SANDSTONE (OLIGOCENE), SOUTH TEXAS by Sandra J. Lindquist	99
RELATIONSHIP OF POROSITY FORMATION AND PRESERVATION TO SANDSTONE CONSOLIDATION HISTORY—GULF COAST LOWER TERTIARY FRIO FORMATION by R. G. Loucks, D. G. Bebout, and W. E. Galloway	109
SECONDARY POROSITY-IMPORTANCE IN SANDSTONE RESERVOIRS IN TEXAS (Short Note) by Earle F. McBride	121
INTERNAL WAVES AND THE NEPHELOID LAYER ON THE CONTINENTAL SHELF IN THE GULF OF MEXICO by David W. McGrail and Richard Rezak	123
PLATE TECTONICS AND SEDIMENTARY CYCLES IN CARBONATES by Morad Malek-Aslani	125
SUB-SALT ORIGIN OF SALT DOME CAP ROCK by Oscar L. Paulson, Jr.	134
DEPOSITIONAL SYSTEMS IN THE SPARTA FORMATION (EOCENE) GULF COAST BASIN OF TEXAS by Jose Ulises Ricoy and L. F. Brown, Jr.	139
A NATURAL ENVIRONMENTAL INFORMATION AND IMPACT ASSESSMENT SYSTEM by Peter G. Rowe, Joel L. Gevirtz, and Phil Weichert	155
THE AUSTIN CHALK-BUDA TREND OF SOUTH TEXAS by Robert J. Scott	164
DIFFERENTIAL SUBSIDENCE OF MARSHLAND PEAT AS A GEOLOGIC HAZARD IN THE GREATER NEW ORLEANS AREA, LOUISIANA by Jesse O. Snowden, Wm. B. Simmons, E. Berkley Traughber, and Raymond W. Stephens	169
STRUCTURE AND STRATIGRAPHY OF A SMALL PLIO-PLEISTOCENE DEPOCENTER, LOUISIANA CONTINENTAL SHELF by William M. Spindler	180
SECONDARY POROSITY IN SANDSTONES OF THE LOWER WILCOX (EOCENE), KARNES COUNTY, TEXAS by George D. Stanton	197
THE GEOLOGY OF THE FRACTURED AUSTIN AND BUDA FORMATIONS IN THE SUBSURFACE OF SOUTH TEXAS by Wilford Lee Stapp	208
✓ PALEOZOIC TECTONICS OF THE SOUTHERN MARGIN OF NORTH AMERICA by Jack L. Walper	230
SOUTH LOUISIANA CRETACEOUS TUSCALOOSA TREND FALSE RIVER FIELD (Abstract) by Joe Adams and F. W. Harrison, Jr.	242
SMACKOVER OIL PROSPECTS IN THE APALACHICOLA EMBAYMENT (Abstract) by A. V. Applegate, F. A. Pontigo, Jr., and J. R. Rooke	243
EFFECTS OF SANDSTONE COMPOSITION AND DIAGENESIS ON RESERVOIR QUALITY, TERTIARY-PLEISTOCENE GULF COAST REGION (Abstract) by David K. Davies and William R. Almon	244
URANIUM HOST DEPOSITIONAL SYSTEMS OF TEXAS GULF COASTAL PLAIN— INFLUENCE OF GENETIC FACIES ON MINERALIZATION PATTERN (Abstract) by W. E. Galloway	245
DEPOSITIONAL FRAMEWORK OF THE LOWER DOCKUM GROUP (TRIASSIC), TEXAS PANHANDLE (Abstract) by J. H. McGowen, G. E. Granata, and S. J. Seni	246
THE TOPOGRAPHIC EXPRESSION OF OIL AND GAS FIELDS IN THE GULF COAST (Abstract) by L. W. Minturn	247
INDIGENOUS PRECAMBRIAN PETROLEUM REVISTED (Abstract) by Grover E. Murray	248

GEOLOGY OF SIERRA BALUARTES DIAPIR AND SIERRA DE PAJAROS AZULES, COAHUILA, MEXICO (Abstract) by Marshall J. Vinet and Alfred E. Weidie	249
STATICS AND DYNAMICS OF NATURAL SYSTEMS—A GENETIC BASIS FOR ASSESSING ENVIRONMENTAL IMPACTS (Abstract) C. M. Woodruff, Jr. and William L. Longley	250

TECHNICAL PAPERS AND ABSTRACTS

Gulf Coast Section of SEPM

HISTORY OF SHORELINE CHANGES DETERMINED BY ARCHAEOLOGICAL DATING: GEORGIA COAST, U.S.A. by Chester B. DePratter and James D. Howard	252
ORIGIN AND CHARACTER OF WASHOVER FANS ON THE GEORGIA COAST, U.S.A. by John R. Deery and James D. Howard	259
✓ DIAGENESIS AND POROSITY DISTRIBUTION IN DELTAIC SANDSTONE, STRAWN SERIES (PENNSYLVANIAN), NORTH-CENTRAL TEXAS by Shirley Petterson Dutton	272
THE INTERNAL STRUCTURE OF OAK GROVE RIDGE CHENIER by Ricky P. Gremillion and William R. Paine	278
SEDIMENT DISPERSAL TRENDS OF THE CAMINADA-MOREAU CHENIER BEACH SYSTEM by John Harper	283
A REVIEW OF THE JACKSONIAN-VICKSBURGIAN BOUNDARY IN THE EAST-CENTRAL GULF COAST BY MEANS OF OSTRACODA by Herbert J. Howe	291
LATE MIOCENE GLACIO-EUSTATIC LOWERING OF SEA LEVEL: EVIDENCE FROM THE CHOCTAWHATCHEE FORMATION, FLORIDA PANHANDLE by Paul F. Huddleston and Ramil C. Wright	299
PETROLOGY AND STRATIGRAPHY OF THE ALABAMA MIOCENE by Wayne C. Isphording	304
GASTROPOD RADULAE: THEIR POTENTIAL IN THE FOSSIL RECORD by Paul R. Krutak	314
LATE QUATERNARY GEOMORPHIC EVOLUTION OF THE COLORADO RIVER, INNER TEXAS COASTAL PLAIN by R. Michael Looney and Victor R. Baker	323
DEPOSITIONAL ENVIRONMENT OF THE GRAYSON FORMATION (UPPER CRETACEOUS) OF TEXAS by Ernest A. Mancini	334
HISTORICAL SHORELINE CHANGES AND THEIR CAUSES, TEXAS GULF COAST by Robert A. Morton	352
PETROLOGY OF THE CATAHOULA SANDSTONES OF EAST TEXAS by J. C. Scheldt and W. C. Ward	365
EVALUATION OF AUSTIN AND BUDA FORMATIONS FROM CORE AND FRACTURE ANALYSIS by Richard H. Snyder and Milton Craft	376
PETROLOGY OF THE SMACKOVER FORMATION (JURASSIC): PERRY AND STONE COUNTIES, MISSISSIPPI by Brian D. Wakelyn	386
PLIO-PLEISTOCENE PALEOGEOGRAPHY OF THE FLORIDA GULF COAST INTERPRETED FROM RELICT SHORELINES by Charles D. Winker and James D. Howard ..	409
COTYPE WELLS FOR THE FIVE CLASSIC FORMATIONS IN PENINSULAR FLORIDA by George O. Winston	421
THE ENVIRONMENTAL GEOLOGIC ANALYSIS OF BAYOU CUMBEST, AN ABANDONED HOLOCENE FLUVIAL SYSTEM (Abstract) by Conrad A. Gazzier	428
ENVIRONMENTAL GEOLOGY OF THE MISSISSIPPI GULF COAST (Abstract) by Conrad A. Gazzier, Lynn P. Malbrough, and Freddie J. Pellegrin	429
EMENDATION OF THE PECAN GAP CHALK (CAMPANIAN) OF NORTHEASTERN TEXAS (Abstract) by C. L. McNulty	430

SHORELINE CHANGES OF THE MISSISSIPPI BARRIER ISLANDS AND RELATED PROCESSES 1847—1973 (Abstract) by Lynn P. Malbrough and Thomas H. Waller	431
ENVIRONMENTAL GEOLOGIC ANALYSIS OF COASTAL MISSISSIPPI, METHODS AND PROCEDURES (Abstract) by Velon H. Minshew, Matthew Broussard, Conrad A. Gazzier, Lynn P. Malbrough and Freddie J. Pellegrin	432

CRETACEOUS CARBONATES OF TEXAS AND MEXICO: Symposium Abstracts

CONTRASTS IN CEMENTATION, DISSOLUTION, AND POROSITY DEVELOPMENT BETWEEN TWO LOWER CRETACEOUS REEFS OF TEXAS by C. W. Achauer	434
LOWER CRETACEOUS STRATIGRAPHIC MODELS FROM TEXAS AND MEXICO by T. A. Bay, Jr.	434
SLIGO AND HOSSTON DEPOSITIONAL PATTERNS, SUBSURFACE OF SOUTH TEXAS by D. G. Bebout	435
REGIONAL CRETACEOUS CROSS SECTIONS—SOUTH TEXAS by D. G. Bebout and R. A. Schatzinger	435
POROSITY DISTRIBUTION IN THE STUART CITY TREND, LOWER CRETACEOUS SOUTH TEXAS by D. G. Bebout, R. A. Schatzinger, R. G. Loucks	436
MIDDLE GLEN ROSE (CRETACEOUS) FACIES MOSAIC, BLANCO AND HAYS COUNTIES, TEXAS by Arthur W. Cleaves	436
PALEOENVIRONMENTAL ANALYSIS OF THE LOWER CRETACEOUS CUPIDO FORMATION, NORTHEAST MEXICO by Jack Conklin and Clyde Moore	437
EARLY AND MIDDLE CRETACEOUS HIPPURITACEA (RUDISTS) OF THE GULF COAST by Alan H. Coogan	437
EXPLORATION HISTORY OF THE SOUTH TEXAS LOWER CRETACEOUS CARBONATE PLATFORM by T. D. Cook	438
DIAGENESIS OF A GIANT: POZA RICA TREND, MEXICO by Paul Enos	438
SIGNIFICANCE OF FRESH-WATER LIMESTONES IN MARINE CARBONATE SUCCESSIONS OF PLEISTOCENE AND CRETACEOUS AGE by Robert B. Halley and Peter R. Rose	439
DEPOSITION AND DIAGENESIS OF THE FORT TERRETT FORMATION (EDWARDS GROUP) IN THE VICINITY OF JUNCTION, TEXAS by Alonzo D. Jacka	439
FACIES, DIAGENESIS, AND POROSITY DEVELOPMENT IN A LOWER CRETACEOUS BANK COMPLEX, EDWARDS LIMESTONE, NORTH CENTRAL TEXAS by Ralph S. Kerr	440
HYDROGEN AND OXYGEN ISOTOPIC COMPOSITION OF CHERT FROM THE EDWARDS GROUP, LOWER CRETACEOUS, CENTRAL TEXAS by Lynton S. Land	440
POROSITY DEVELOPMENT AND DISTRIBUTION IN SHOAL-WATER CARBONATE COMPLEXES—SUBSURFACE PEARSALL FORMATION (LOWER CRETACEOUS) SOUTH TEXAS by R. G. Loucks	441
CARBONATE FACIES DISTRIBUTION AND DIAGENESIS ASSOCIATED WITH VOLCANIC CONES—ANACACHO LIMESTONE (UPPER CRETACEOUS) ELAINE FIELD, DIMMIT COUNTY, TEXAS by P. E. Luttrell	441
LOWER CRETACEOUS SEDIMENTARY FACIES AND SEA LEVEL CHANGES, U.S. GULF COAST by Edward McFarlan, Jr.	442
DIAGENESIS AND GEOCHEMISTRY OF A GLEN ROSE PATCH REEF COMPLEX, BANDERA COUNTY, TEXAS by Timothy J. Petta	442
CARBON AND OXYGEN ISOTOPIC EVOLUTION OF WHOLE ROCK AND CEMENTS FROM THE STUART CITY TREND (LOWER CRETACEOUS, SOUTH-CENTRAL TEXAS) by D. R. Prezbindowski	443

DIAGENETIC PATTERNS OF THE AUSTIN GROUP AND THEIR CONTROL OF PETROLEUM POTENTIAL by Peter A. Scholle and Kelton Cloud	443
LOWER CRETACEOUS DEPOSITIONAL SYSTEMS, WEST TEXAS by R. W. Scott and E. J. Kidson	444
INITIATION OF LOWER CRETACEOUS REEFS IN SABINAS BASIN, N.E. MEXICO by Colin L. Stabler and Benjamin Marquez D.	445
A LOWER CRETACEOUS SHELF MARGIN IN NORTHERN MEXICO by James Lee Wilson and Giampaolo Pialli	445
LOWER CRETACEOUS CARBONATES OF CENTRAL SOUTH TEXAS: A SHELF-MARGIN STUDY by J. W. Wooten and W. E. Dunaway	446
MIDDLE CRETACEOUS ROCKS OF MEXICO AND TEXAS by Keith Young	446

GULF COAST ASSOCIATION OF GEOLOGICAL SOCIETIES

PRESIDENT	Robert E. Boyer The University of Texas at Austin, Austin, Texas
VICE PRESIDENT	Raymond M. Stephens University of New Orleans, New Orleans, Louisiana
SECRETARY	Ann E. Bell Texas Water Development Board, Austin, Texas
TREASURER	Fred L. Osborne, Jr. Texas Water Development Board, Austin, Texas
PAST PRESIDENT	C. Lane Sartor Wheless Industries, Inc., Shreveport, Louisiana

EXECUTIVE COMMITTEE

ALABAMA GEOLOGICAL SOCIETY	M. W. Szabo, Alabama Geological Survey
AUSTIN GEOLOGICAL SOCIETY	Sergio Garza, U.S. Geological Survey
CORPUS CHRISTI GEOLOGICAL SOCIETY	Ralph Andrews, Independent
EAST TEXAS GEOLOGICAL SOCIETY	Gerry C. Merket, Atlantic Refining Company
HOUSTON GEOLOGICAL SOCIETY	Sabin W. Marshall, Texas Gas Transmission
LAFAYETTE GEOLOGICAL SOCIETY	Jack A. Campione, South Louisiana Producing Co.
MISSISSIPPI GEOLOGICAL SOCIETY	Dean Kebert, Weaver Oil and Gas Corp.
NEW ORLEANS GEOLOGICAL SOCIETY	Jules Braunstein, Shell Oil Co.
SHREVEPORT GEOLOGICAL SOCIETY	James B. Harris, Midroc Oil Co.
SOUTHEASTERN GEOLOGICAL SOCIETY	Ralph G. Stevenson, Univ. of Southern Florida
SOUTH TEXAS GEOLOGICAL SOCIETY	Richard H. Sams, Independent

OFFICERS OF MEMBER SOCIETIES GULF COAST ASSOCIATION OF GEOLOGICAL SOCIETIES

ALABAMA GEOLOGICAL SOCIETY, P. O. Box 6184, University, Alabama 35486	
PRESIDENT	M. W. Szabo, Alabama Geological Survey
VICE PRESIDENT	T. A. Simpson, University of Alabama-Tuscaloosa
SECRETARY	M. J. Neilson, University of Alabama-Birmingham
TREASURER	G. W. Swindel, Jr., Alabama Geological Survey
AUSTIN GEOLOGICAL SOCIETY, P. O. Box 1302, Austin, Texas 78767	
PRESIDENT	E. G. Wermund, Bureau of Economic Geology
VICE PRESIDENT	Robert A. Sheldon, Consultant
SECRETARY	Peggy Harwood, General Land Office
TREASURER	Bernard B. Colley, Consultant

CORPUS CHRISTI GEOLOGICAL SOCIETY, P. O. Box 1068, Corpus Christi, Texas 78403
 PRESIDENT George K. Fegan, Gas Producing Enterprises, Inc.
 FIRST VICE PRESIDENT Carroll Pitzer, Independent
 SECOND VICE PRESIDENT Bill Maxwell, Harkins and Co.
 SECRETARY Helen Klein, Gas Producing Enterprises, Inc.
 TREASURER Cliff McTee, Independent

EAST TEXAS GEOLOGICAL SOCIETY, P. O. Box 216, Tyler, Texas 75701
 PRESIDENT Bernard H. Ward, Consultant
 VICE PRESIDENT Jim Ewbank, Delta Drilling Co.
 SECRETARY-TREASURER Wayne Bostik, Exxon Co., USA

HOUSTON GEOLOGICAL SOCIETY, 806 Main Street, Suite B-1, Houston, Texas 77002
 PRESIDENT Dean Grafton, Cities Service Co.
 FIRST VICE PRESIDENT Jeffery V. Morris, Transcontinental Gas Pipeline Co.
 SECOND VICE PRESIDENT William A. Fowler, Jr., Phillips Petroleum Co.
 SECRETARY W. L. Tidwell, Independent
 TREASURER Eleanor M. Hoover, Exxon Company USA

LAFAYETTE GEOLOGICAL SOCIETY, P. O. Box 51896 Oil Center Station, Lafayette,
 Louisiana 70505
 PRESIDENT Jack A. Campione, South Louisiana Producing Co.
 FIRST VICE PRESIDENT Harry Mathy, Independent
 SECOND VICE PRESIDENT Phil Martin, Pritchett & Dykes
 SECRETARY Marvin Martin, Patrick Petroleum
 TREASURER Francis Broussard, Arco

MISSISSIPPI GEOLOGICAL SOCIETY, P. O. Box 422, Jackson, Mississippi 39205
 PRESIDENT David Cate, First Mississippi Corp.
 FIRST VICE PRESIDENT Sarah C. Childress, Mississippi Geol. Survey
 SECOND VICE PRESIDENT Lester Aultman, Pruet & Hughes Co.
 SECRETARY Edwin E. Luper, Mississippi Geol. Survey
 TREASURER Ray Lewand, Forest Oil Corp.

NEW ORLEANS GEOLOGICAL SOCIETY, INC., Box 52172, New Orleans, Louisiana 70152
 PRESIDENT Shelby W. Smith, Texaco, Inc.
 FIRST VICE PRESIDENT Daniel E. Hudson, Pelto Oil Co.
 SECOND VICE PRESIDENT Willis W. Tyrrell, Jr., Amoco
 SECRETARY Calvin A. Parker, Shell Oil Co.
 TREASURER Joseph G. Meinert, Mobil Oil Corp.

SHREVEPORT GEOLOGICAL SOCIETY, P. O. Box 750, Shreveport, Louisiana 71162
 PRESIDENT H. N. Kinney Brookings, Brookings, Waddle & Assoc.
 FIRST VICE PRESIDENT L. Lee Kincade, Jr., Consultant
 SECOND VICE PRESIDENT Robert E. Daigle, Consultant
 SECRETARY Robert L. Williamson, A. J. Hodges Industries, Inc.
 TREASURER Max G. Hare, Arkla Exploration Co.

SOUTHEASTERN GEOLOGICAL SOCIETY, P. O. Box 1634, Tallahassee, Florida 32302
 PRESIDENT Peter MacGill, Florida Bureau of Geology
 VICE PRESIDENT David P. Brown, U.S. Geological Survey
 SECRETARY-TREASURER James H. Carson, N.W. Florida Water Dist.

SOUTH TEXAS GEOLOGICAL SOCIETY, B-100 Petroleum Center, San Antonio, Texas 78209
 PRESIDENT Richard H. Sams, Independent
 VICE PRESIDENT Edward C. Roy, Trinity University
 SECRETARY Don A. Urbanec, Consultant
 TREASURER George L. Long, Independent

REPORT OF THE PRESIDENT

GULF COAST ASSOCIATION OF GEOLOGICAL SOCIETIES



Welcome to the 27th Annual Meeting of the CGAGS on behalf of the Austin Geological Society. As a fledgling Association member of only three years, it gives our Society particular delight to host the Convention and to share the rewards of this fine Association.

Our theme of Earth-Energy-Environment speaks to the key role of geologists in the Gulf Coast region, both in the past and, more importantly, for the foreseeable future. It is our challenge to continue to develop the wealth of the Gulf's energy resources and it is our responsibility to do this in harmony with the environment. The leadership role GCAGS has played in these tasks must be continued, indeed, increased. At a time when energy policy and incentives for energy development are wanting, we must rise to new heights as we meet the objectives for which GCAGS stands.

During the past year, your Executive Committee has continued to strive for the most efficient operation of the Association. Scott Lysinger has been selected to serve as the Regional Councillor to represent our section on the AAPG Advisory Council. Scott brings to that Council his years of experience with the Association, including the presidency of both the Lafayette

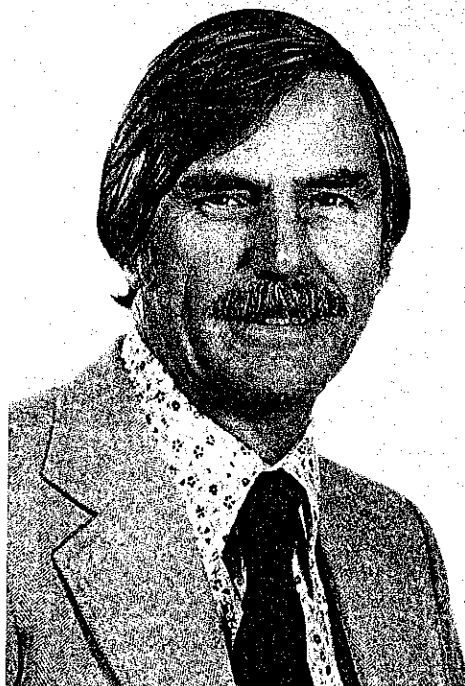
Geological Society and GCAGS. We thank Don Boyd who completed his term on the Council and commend him for his distinguished service.

I can report that GCAGS is fiscally sound and has the good fortune of a responsible and dedicated Executive Committee to guide them. Strides have been made in establishing a standing Finance Committee, whose responsibility will be to oversee the financial affairs of the Association, other than the budget allocated for each Annual Meeting. This Committee will provide year-to-year continuity for our fiscal state including investments. We have also established a Scholarship Fund to provide support for worthy students pursuing energy-related studies in the Gulf region. These scholarships are a long-range security to provide well-trained geoscientists for future employment in our endeavors as prospectors of energy supplies. The Association can take pride as a substantial contributor to the new Weeks AAPG building in Tulsa. We have provided funds to help furnish a conference room in that building, and a plaque recognizing our contribution will be appropriately displayed there.

We hope that everyone will thoroughly enjoy the program of this Convention. I thank E. G. Wermund, General Chairman, and the many people who worked with him to make all the arrangements so that your visit to Austin will be enjoyable as well as professionally profitable. A Cretaceous Symposium has been added to the usual technical sessions under the auspices of GCAGS and SEPM and I think you will appreciate this added dimension. The duty of serving as your President was made a distinct pleasure by the many people involved, both in preparing for this Convention and in guiding the affairs of the Association during this past year. I thank all of them.

Robert E. Boyer
President
Gulf Coast Association of Geological Societies

**REPORT OF THE GENERAL CHAIRMAN
TWENTY-SEVENTH ANNUAL MEETING-1977**



As General Chairman for the 27th annual meeting of the Gulf Coast Association of Geological Societies, I speak for the many hard working people who have organized this meeting. We welcome you to Austin and wish you well. We expect you will enjoy this opportunity to socialize with fellow geologists, renew old acquaintances and make new friends. We believe that you will be stimulated by an intellectual forum which includes concurrent meetings of the GCAGS, and the SEPM; and a Cretaceous Symposium arranged especially for this meeting, as well as numerous provocative field trips.

We thank the many contributors who have so generously supported this meeting. They include the underwriters of particular expenses, exhibitors and advertisers. It would not be possible to develop a GCAGS meeting, historically the best sectional meeting of geologists, without this generous assistance. Finally, we thank each registrant for attendance and personal contribution to the first meeting of the GCAGS in Austin.

In perusing your Transactions I ask that you note the list of committee members who organized this meeting. You will learn the names of efficient, capable people who made this meeting a success. Note the place of employment for the geologists and wives, and you can get a feel for the Austin Geological Society. Most of our members are listed as members of one committee or another. I am proud to have worked with such dedicated, productive and warm friends.

E. G. Wermund
General Chairman

REPORT OF THE TRANSACTIONS EDITOR

Traditionally technical papers published in the *Transactions* have addressed the current problems and interests of geologists working in the Gulf Coast. This issue is no exception, as exemplified by the diversity of topics covered: stratigraphy, subsurface structural geology, tectonics, paleontology, sedimentology, diagenesis of Gulf Coast clastics, sedimentary processes, environmental geology, and oil and gas exploration. Abstracts from the Cretaceous Symposium, held concurrently with the GCAGS and Gulf Coast Section SEPM, meetings are also included in the publication.

I wish to acknowledge the conscientious efforts of the editorial committee — Joyce M. Basciano, Robert S. Kier, Robert A. Morton, and Bonnie R. Weise — who did a commendable job reviewing the manuscripts submitted for publication. Cecille Haynie and Karen M. White of the editorial staff of the Bureau of Economic Geology and Claudia Farmer of the cartographic section of the Bureau were most helpful in offering editorial assistance and advice in the final layout of the *Transactions*. A special thanks to Samuel P. Ellison, Jr., Department of Geology, The University of Texas at Austin, who assumed the responsibility as editor for technical papers submitted to the Gulf Coast Section of SEPM. I also wish to express my appreciation to the contributing authors who made a special effort to meet the necessary editorial deadlines.

Mary Pieper
1977 *Transactions* Editor

ORGANIZATION
TWENTY-SEVENTH ANNUAL MEETING

*E. G. WERMUND—GENERAL CHAIRMAN, Bureau of Economic
Geology, The University of Texas at Austin*
*EARL F. McBRIDE—VICE GENERAL CHAIRMAN, Department of
Geological Sciences, The University of Texas at Austin*

Advertising Committee

Peggy Harwood, General Land Office, Chairman
Delores Seaton, General Land Office
George L. King, Texas Department of Health

Arrangements Committee

Ann E. St. Clair, Bureau of Economic Geology,
Chairman
Robert A. Sheldon, Consultant
Tom Evans, Bureau of Economic Geology

Awards Committee

George Stanton, Bendix Field Engineering Corp.,
Chairman
John V. Quick, Core Lab, Inc., Dallas

Editorial Committee

Mary K. Pieper, Bureau of Economic Geology, Editor
Joyce M. Basciano, Bureau of Economic Geology
Robert S. Kier, Bureau of Economic Geology
Robert A. Morton, Bureau of Economic Geology
Bonnie R. Weise, Bureau of Economic Geology

Entertainment Committee

Grace Klement, St. Joe American Corp., Chairman
Barbara Beard, General Land Office

Exhibits Committee

James W. Sansom, Texas Department of Water Re-
sources, Chairman
Jan Knox, Texas Department of Water Resources
Leon Byrd, Texas Department of Water Resources

Field Trip Committee

James Sprinkle, Department Geological Sciences,
Chairman
Robert S. Kier, Bureau of Economic Geology
Charles W. Kreidler, Bureau of Economic Geology

Golf Tournament

Bernard Colley, Consultant, Chairman
Jan Turk, Department of Geological Sciences
Joe O'Connor, Consultant

Housing Committee

Sergio Garza, U.S. Geological Survey, Chairman
Ernest T. Baker, Jr., U.S. Geological Survey

Ladies Activities Committee

Marilyn Scott, Chairman
Barbara Backus
Sally Muehlberger
Marietta Langston
Marian Maxwell
Susan Bently Wermund
Yvonne Burk

Printing Committee

Rizer Everett, Consultant, Chairman
G. K. Eifler, Jr., Consultant
Tom S. Patty, State Department of Highways

Program Committee

Victor R. Baker, Department Geological Sciences,
Chairman

Publicity Committee

Ross L. Shipman, The University of Texas Marine
Science Institute, Chairman
Ernest T. Baker, Jr., U.S. Geological Survey
L. Edwin Garner, Bureau of Economic Geology

Registration Committee

William Price, Consultant, Chairman

SEPM

Representative Don Bebout, Bureau of Economic
Geology
Editor Samuel P. Ellison, Jr., Department Geological
Sciences
Robert G. Loucks, Bureau of Economic Geology

Speaker Assistance Committee

Thomas W. Grimshaw, Radian Corp., Chairman
Stephen Shaw, William F. Guyton & Associates
Ernst Kastning, Radian Corp.
Robert J. Finley, Bureau of Economic Geology
Tobin Theater
Stephen L. Shaw, William F. Guyton & Associates
Robert J. Finley, Bureau of Economic Geology

Tennis Tournament

Ralph Kehle, Department Geological Sciences,
Chairman
Jo Layne Kehle

Transportation Committee

Rollin W. Harden, Consultant, Chairman
Robert L. Bluntzer, Texas Department of Water
Resources

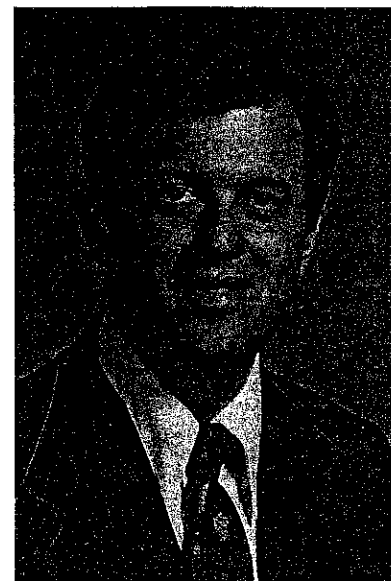
GULF COAST ASSOCIATION OF GEOLOGICAL SOCIETIES
BEST PAPER AWARDS, TWENTY-SIXTH ANNUAL MEETING
SHREVEPORT, LOUISIANA

FIRST PLACE: and the A.I. Levorsen Memorial Award to Joe D. Robinson and Arthur R. Troell for their paper entitled "Combination Entrapment in the Smackover Formation at Chalybeat Springs Field, Columbia County, Arkansas." Joe D. Robinson received the B.A. in Geology from Texas Christian University in 1956. Upon graduation he was employed by Amoco Production Company. During his 19 year affiliation with the company he served as Exploration Geologist in Casper, Wyoming; Lubbock, Fort Worth, and Houston, Texas. Mr. Robinson is currently with Westland Oil and Development Corporation in Houston, Texas.



Joe D. Robinson

Arthur R. Troell received his B.S. degree from The University of Texas at Austin in 1958, his M.S. from the Missouri School of Mines in 1960, and his Ph.D. from Rice University in 1965. Dr. Troell worked as a consultant to Tenneco Oil Company in Turkey during 1963 and was a research geologist for Conoco Oil Company in Ponca City, Oklahoma from 1964 to 1965. Currently he is District Geologist for the West Texas-New Mexico District of Amoco Production Company based in Houston, Texas. Dr. Troell is a member of the American Association of Petroleum Geologists. His professional interests include the application of stratigraphy and petrology in the search for hydrocarbon reserves.



Arthur R. Troell

SECOND PLACE: to Jack W. Becher and Clyde H. Moore for their paper entitled "The Walker Creek Field: A Smackover Diagenetic Trap". Jack W. Becher received his B.S. degree in geology from Oregon State University in 1972. He attended Louisiana State University and received his M.S. degree in 1975. Since graduation he has been employed by Phillips Petroleum Company. He is currently assigned to exploration in the Permian Basin of West Texas. Mr. Becher is a member of the American Association of Petroleum Geologists, The Society of Economic Paleontologists and Mineralogists, and the International Association of Sedimentologists.



Jack W. Becher

Clyde H. Moore attended Louisiana State University where he received his B.S. degree in 1955. He received his M.S. and Ph.D. degrees from the University of Texas at Austin in 1959 and 1961. Dr. Moore was a research geologist with Shell Development Company from 1961 to 1966 working in Central Texas, the Atlantic Coast and the Pacific Coast basins. Since joining the faculty at L.S.U. in 1966, he has been actively engaged in carbonate research in Holocene as well as ancient sequences across the northern Gulf and Caribbean. He has published extensively in Mesozoic stratigraphy, carbonate petrology and carbonate sedimentology. At present Dr. Moore is Director of the L.S.U. Department of Geology Applied Carbonate Research Program.



Clyde H. Moore

THIRD PLACE: to Janet Neel for her paper entitled "South Jennings and Jennings Townsite Field, Jefferson Davis Parish, Louisiana." Janet Neel was born in Oviedo, Florida in 1952 and received her B.S. in Geology in 1973 from Emory University in Atlanta, Georgia. She is currently employed by Union Texas Petroleum Company in Lafayette, Louisiana. Ms. Neel is a member of the Lafayette Geological Society and the American Association of Petroleum Geologists.



Janet Neel

GULF COAST ASSOCIATION OF GEOLOGICAL SOCIETIES PAST OFFICERS AND CONVENTION CHAIRMEN

YEAR	HOST SOCIETY	PRES.	V. PRES.	SEC.	TREAS.	CONVENTION CHAIRMAN
1951	New Orleans	L. Bowling				
1952	Corpus Christi	W. M. Craddick				E. J. Nugent
1953	Shreveport	R. T. Wade		J. S. Spencer		
1954	Houston	W. R. Canada	W. H. Knight	W. A. Peterson	E. W. Kimball	
1955	Biloxi	A. E. Blanton	L. D. Troupe	F. H. Webster	C. C. Barber	
1956	San Antonio	R. L. Layden	M. W. Beckman	C. W. Holcomb	A. F. Scott	
1957	New Orleans	H. N. Hickey	P. Montgomery	R. A. Davis	K. C. Anderson	
1958	Corpus Christi	E. A. Lohse	R. W. Grayson	E. T. Musselman	W. H. Wallace, Jr.	
1959	Houston	G. C. Hardin, Jr.	L. Harvey	J. F. Moss	J. A. Wheller	O. G. Bell
1960	Biloxi	M. F. Kirby	D. N. Osburn	W. W. Woolfolk	E. G. Jeffreys	A. E. Blanton
1961	San Antonio	D. Dassow	E. P. Roth	A. W. Wood	E. L. Ames	L. L. Palmer
1962	New Orleans	T. H. Philpott	J. C. Byrd	H. O. Woodbury	K. Soule	L. H. Meltzer
1963	Shreveport	J. C. Byrd	E. Knott	W. E. Bancroft	R. E. Rogers	H. J. Tyler
1964	Corpus Christi	E. Knott	R. E. Fairchild	R. W. Luker	D. A. Pedrotti	B. F. Dyer
1965	Houston	R. E. Fairchild	A. M. Borland	K. C. Harkins, Jr.	J. L. George, Jr.	E. A. Lohse
1966	Lafayette	A. M. Borland	J. H. Hensley	W. A. Robbins, Jr.	J. S. Schoelen	R. R. Copeland
1967	San Antonio	W. L. Stapp	M. D. Horton	M. L. Frazier, Sr.	L. C. Bryant	M. O. Turner
1968	Jackson	M. D. Horton	R. O. Vernon	L. G. Hughes	E. D. Minihan	L. E. Warren
1969	Miami	R. O. Vernon	H. J. Tyler	J. W. Yon, Jr.	C. W. Hendry, Jr.	H. S. Puri
1970	Shreveport	H. J. Tyler	L. H. Meltzer	C. E. Brown	B. C. Tucker	J. O. Goffe
1971	New Orleans	L. H. Meltzer	D. R. Boyd	M. L. Dwight	P. G. Gray	R. G. Williamson
1972	Corpus Christi	D. R. Boyd	F. M. Schall	M. H. Oakes	J. E. Melton	J. M. Sides
1973	Houston	F. M. Schall, Jr.	S. J. Lysinger	M. E. Hole, Jr.	P. W. Cawthon, Jr.	C. E. Harrison
1974	Lafayette	S. J. Lysinger	W. H. Moore	T. J. Eby, Jr.	J. J. Bellamy	F. W. Harrison, Jr.
1975	Jackson	W. H. Moore	C. L. Sartor	W. E. Taylor	H. L. Ladner	C. H. Williams, Jr.
1976	Shreveport	C. L. Sartor	R. E. Boyer	J. T. Palmer	C. E. Brown	L. E. Jordan
1977	Austin	R. E. Boyer	P. G. Gray	A. E. Bell	F. L. Osborne, Jr.	E. G. Wermund, Jr.

**GULF COAST SECTION
SOCIETY OF ECONOMIC
PALEONTOLOGISTS AND MINERALOGISTS**

OFFICERS

President: Clifton A. Couture, Amoco Production Company, P.O. Box 50879, New Orleans, Louisiana 70150.

President-Elect: Gerald R. Stude, Exxon Company, U.S.A., P.O. Box 61975, New Orleans, Louisiana 70161.

Vice President: Eleanor T. Caldwell, Exxon Company, U.S.A., P.O. Box 61812, New Orleans, Louisiana 70161.

Secretary: Sherwood W. Wise, Department of Geology, Florida State University, Tallahassee, Florida 32306.

Treasurer: Joseph E. Boudreaux, Texaco, Inc., P.O. Box 60252, New Orleans, Louisiana 70160.

Past President: James L. Lamb, Exxon Production Research Co., P.O. Box 2189, Houston, Texas 77001, 713-965-4106

PROGRAM COMMITTEE

Program Chairman: Don G. Bebout, Bureau of Economic Geology, University of Texas, Austin, Texas 78712.

Editor: Samuel P. Ellison, Jr., Géology Department, University of Texas, Austin, Texas 78712

BUSINESS REPRESENTATIVES

ALABAMA & GEORGIA

Tuscaloosa: C. Everett Brett, The University of Alabama, Natural Resources Center, Office of the Director, Box 6282, University, Alabama 35486

FLORIDA

Tallahassee-Gainesville: Ramil C. Wright, Department of Geology, Florida State University, Tallahassee, Florida 32303

Tampa-St. Petersburg: Muriel E. Hunter, Coastal Petroleum Company, P.O. Box 297, Pinellas, Florida 33565

Miami: William H. Hay, Rosenstiel School of Marine and Atmospheric Science, University of Miami, 46007 Rickenbacker Causeway, Miami, Florida 33149

LOUISIANA

Baton Rouge: Alvin M. Phillips, Jr., School of Geosciences, Louisiana State University,
Baton Rouge, Louisiana 70803

Lafayette: Pat F. Hawkins, Union Oil Company of California, Box 51388, OCS Lafayette,
Louisiana 70501

New Orleans: George C. Esker III, Texaco, Inc., P. O. Box 60252, New Orleans,
Louisiana 70160

MISSISSIPPI

State College: Ernest E. Russell, Department of Geology and Geography, Mississippi
State University, State College, Mississippi 39762

TEXAS

Austin: Earl E. McBride, Department of Geology, University of Texas, Austin, Texas
78712

Beaumont: William R. Pampe, Department of Geology, Lamar University, P.O. Box
10031, LU Station, Beaumont, Texas

College Station: Wayne M. Ahr, Department of Geology, Texas A&M University, College
Station, Texas 77843

Dallas: W.T. (Tom) Rothwell, Jr., Independent, 322 Sutton Place, Richardson, Texas
75080

Houston: Richard E. Casey, Department of Geology, Rice University, Houston, Texas
77001

San Antonio: Porter A. Montgomery, Jr., Montgomery's Stratigraphic Service, 1517
Milam Building, San Antonio, Texas 78205

REPORT OF THE PRESIDENT GULF COAST SECTION—SOCIETY OF ECONOMIC PALEONTOLOGISTS AND MINERALOGISTS

The Gulf Coast Section of the Society of Economic Paleontologists and Mineralogist has grown to over five hundred members. Our goal is six hundred and hopefully it should be accomplished in the near future. This is the first year that we have had a president-elect in the name of Gerald Stude, a very excellent and innovative person.

Our business representatives have provided Sherwood Wise with informative items resulting in two newsletters. Don Bebout, our program chairman and Samuel P. Ellison, Jr., Editor, have arranged an excellent technical session. The section wishes to thank these two gentlemen and all of their assistants.

Congratulations to Doris M. Curtis, President-elect of the national SEPM. Doris, we are very proud of you and wish you well.

Julius B. Garrett, one of the great men in paleontology experienced an eye operation in late May. We are very concerned, so please get well soon.

The past transactions reveal very clearly that most of the technical papers are contributed by our academic members. Since more than three-quarters of the GCS membership is industry oriented, it is obvious that this sector of the GCS should contribute at least a proportionate share of papers. Company files are bulging at the seams with data from many areas that could be released for publication. In many respects, it is beneficial to employee and company to participate by presenting informative, meaningful papers at our technical sessions.

Certainly, it has been a privilege and an honor to serve as your president this year; however, the cooperation of the membership, the GCAGS President, Robert E. Boyer, GCAGS General Chairman, E. G. Wermund, and his convention committee made my job very enjoyable. In conclusion, my deep appreciation and thanks are extended to the outgoing council: Eleanor T. Caldwell, Vice President, Sherwood W. Wise, Secretary, Joseph E. Boudreaux, Treasurer, James Lamb, Past President, and Gerald R. Stude, President-elect.

Cliff Couture
President GCS — SEPM

HONORARY MEMBERSHIP GULF COAST SECTION—SEPM



DORIS M. CURTIS

Doris Malkin Curtis is well known by members of the Gulf Coast Section of SEPM through her contributions in technical papers and her activities in the SEPM. She is a Staff Geologist at Shell Oil Company and is assigned to the Exploration Geology Research Section in Houston, Texas.

Doris was born and reared in Brooklyn, New York, studied for her bachelor's degree at Brooklyn College, and completed her Doctorate at Columbia University. Her dissertation involved the biostratigraphy of the Miocene of the Atlantic Coastal Plain. As a graduate student she worked at the American Museum of Natural History on the Catalogue of Foraminifera. In 1939 she moved to Houston to seek employment in the petroleum industry. After working a few years with several small companies, Doris was hired by Shell Oil in 1941. Her initial assignment was as a paleontologist. Subsequently, she has worked as a stratigrapher, and as a geologist. From the beginning of her career she was active with the Houston Geological Society by chairing committees and authoring technical papers on Gulf Coast stratigraphy. As exploration emphasis shifted, she was relocated to exploration offices in Tallahassee, Baltimore, and New Orleans. In 1950 the first phase of her Shell career was ended when she married a Shell geologist. Not wanting to put aside her talents as an earth scientist, she joined the faculty of the University of Houston as an Assistant Professor and taught there for two years. It was about this time that the now famous American Petroleum Institute Project 51 was gaining momentum and Doris, sensing the importance and scope of its program, immediately recognized a research challenge in which she wished to participate. She joined Scripps Institute of Oceanography as an

Associate Research Geologist and completed a detailed study of the biofacies of ostracod assemblages in relation to the various environments of deposition on the Northwest Gulf of Mexico shelf.

In 1954 Doris resumed her teaching career and joined the faculty at the University of Oklahoma. After five years as an Assistant and Associate Professor of Geology specializing in sedimentology, she returned to Shell Oil and was assigned to the special studies group at the Baton Rouge Exploration office. It was in this assignment that she initiated regional studies of time-synchronous sandstone deltas in the petroleum-rich Miocene of Coastal Louisiana. In 1970 a synthesis of this important work was published in SEPM Special Publication No. 15. Through the years she has authored papers on paleoecology, biostratigraphy, ostracods, transgressive and regressive sedimentation, and deltaic sedimentation. Most recently, as an avocation, her research interests have been directed towards evidence for Mid-Miocene sea level lowering.

Doris' record of service to SEPM is outstanding. She was elected Secretary-Treasurer in 1964, was Technical Program Co-Chairman for the 1965 AAPG-SEPM Annual Convention, and was Chairman of the Constitutional Revision Committee from 1966 to 1967. From 1966 through 1969 she was a member of the Research Committee, and from 1969 to 1971 she chaired an SEPM-Paleontological Society coordination committee. She was Chairman of the Nomination Committee from 1973 to 1974. In recognition of her technical contributions and dedicated service to the organization she was presented Honorary Membership in 1974. For the 1976 50th Anniversary Committee she served as Chairman of the Sub-committee for Technical Affairs, and through tenacity and much "jawboning" brought about the highly successful Semicentennial Commemorative Session which was presented at the 1976 Convention in New Orleans. In this endeavor she performed double service in that she co-authored the contribution of our Gulf Coast Section-SEPM. In conjunction with the 50th Anniversary celebration, she compiled reprint series Volume 1 on Diagenesis and Volume 2 on Paleocology.

Doris has also served our Gulf Coast Section as Business Representative, as Treasurer from 1974 to 1975, and for several years as a member of the Nominating Committee.

As one might expect, Doris takes an active part in most of the professional organizations of which she is a member. Of special note she has co-authored and presented technical papers in Europe at the proceedings of the International Association of Sedimentologists. Presently, she is serving the Houston Geological Society as Chairman of the Special Publications Committee.

In recognition of her active participation in the League of Women Voters, and especially as a recognized authority in the petroleum professional community, she was selected in 1967 as one of four delegates from the United States to participate in an exchange visit to the USSR. During this visit she had an opportunity to visit the Baku area on the Caspian Sea and other areas in European Russia.

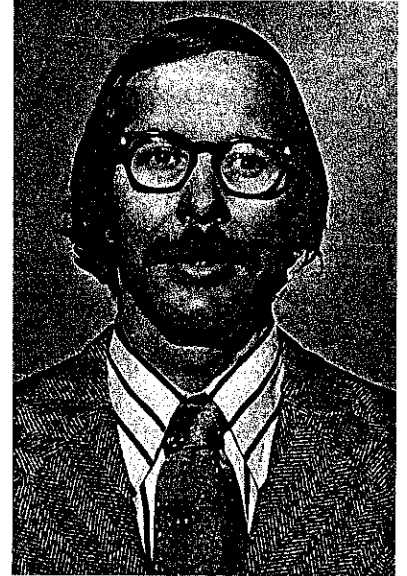
Doris Malkin Curtis has distinguished herself in service to SEPM, the Gulf Coast Section of SEPM, and to the profession of Petroleum Geology in many ways. To know her is to experience her dedication and interest in all facets of geology. Her professional enthusiasm overflows and manifests itself in seeking or accepting assignments in the many professional societies of which she is a member. The culmination of her unselfish attention in these activities has resulted in her election as President-Elect of SEPM, 1977-1978. She is the first woman to achieve this office, and it is a highly deserved tribute accorded her by the membership.

In recognition of her many accomplishments, the Gulf Coast Section of SEPM awards and recognizes Doris Malkin Curtis as a distinguished Honorary Member.

Edward B. Picou, Jr.

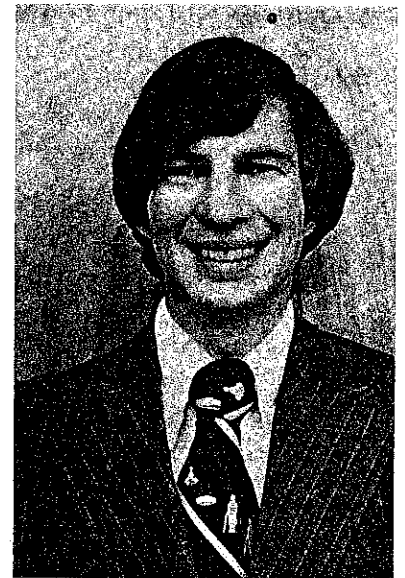
GULF COAST SECTION OF SEPM BEST PAPER AWARDS—
TWENTY-SIXTH ANNUAL MEETING
SHREVEPORT, LOUISIANA

FIRST PLACE: to Charles J. Stuart and Charles A. Caughey for their paper entitled "Form and Composition of the Mississippi Fan." Charles Stuart completed his undergraduate work at San Diego State University in 1964 and received his M.S. from the University of Montana in 1966. From 1966 to 1970, he was employed by Marathon Oil Company and worked in both Casper, Wyoming and Houston, Texas. He returned to graduate school at the University of California at Santa Barbara and completed his Ph.D. in 1975. Mr. Stuart is currently employed by the Exploration Research Division of Continental Oil Company. His major interests are in the development of techniques for geologic interpretation of seismic data.



Charles J. Stuart

Charles A. Caughey attended the University of Texas at Austin where he received his B.S. and M.S. degrees in 1969 and 1973. During his graduate studies he was employed part time by the Bureau of Economic Geology. Upon graduation, he joined the Exploration Research Division of Continental Oil Company in Ponca City, Oklahoma. He was transferred to the Louisiana Division, Lafayette, in 1976, where he is currently involved in the exploration of the Lower Miocene in the Atchafalaya Basin of south Louisiana. Mr. Caughey's professional interests are applied sedimentology and stratigraphy.



Charles A. Caughey

SECOND PLACE: to Robert R. Berg and Raina R. Powell for their paper entitled "Density-flow Origin for Frio Reservoir Sandstones, Nine Mile Point Field, Aransas County, Texas." Robert R. Berg received his B.A. and Ph.D. degrees in geology from the University of Minnesota in 1948 and 1951. From 1951 to 1956, he was employed by the California Company, a subsidiary of the Standard Oil Company of California, and from 1957 to 1966, he was a consulting geologist in the Rocky Mountain area. Dr. Berg in 1967 became professor and Chairman of the Department of Geology at Texas A&M University. In July, 1972, he was named Director of the Office of University Research, Texas A&M University. Dr. Berg's research interests include petroleum geology, subsurface stratigraphy, and sedimentology. He is a Fellow of the Geological Society of America, and a member of the American Association of Petroleum Geologists and of the American Institute of Professional Geologists. He is currently a lecturer in the Continuing Education Program of the American Association of Petroleum Geologists.



Robert R. Berg

Raina R. Powell received a B.S. degree from Stephen F. Austin State University in 1974 and a M.S. degree in geology from Texas A&M University in 1976. Upon graduation she was employed by the Mid-Continent Division of Chevron, U.S.A. Incorporated based in Denver, Colorado. Ms. Powell is a member of Sigma Gamma Epsilon and the American Association of Petroleum Geologists.



Raina R. Powell

THIRD PLACE: to C. Wylie Poag and Page C. Valentine for their paper entitled "Biostratigraphy and Ecostratigraphy of the Pleistocene Basin, Texas-Louisiana Continental Shelf." C. Wylie Poag completed his undergraduate work in geology at Florida State University. He completed his M.S. at Louisiana State University in 1963 and his Ph.D. at Tulane University in 1971. He joined Chevron Oil Company in 1963 as an exploration micropaleontologist. In 1970, he joined the Department of Oceanography faculty at Texas A&M University. He spent 1974 on assignment from Texas A&M to the National Science Foundation as Assistant Project Officer for the Deep Sea Drilling Project. In the Fall of 1974, he joined the U.S. Geological Survey as a member of the Paleontology and Stratigraphy Branch at Woods Hole, Massachusetts. Dr. Poag's research includes analysis of Cenozoic and Mesozoic foraminiferal assemblages from the Atlantic and Gulf of Mexico outer continental shelf. He is a member of the American Association of Petroleum Geologists, American Association for the Advancement of Science, Society of Economic Paleontologists and Mineralogists, Paleontology Society, American Quaternary Association, Paleontological Research Institution, and Sigma Xi.



C. Wylie Poag

Page C. Valentine earned his B.S. and M.S. degrees from George Washington University in 1968 and 1970. He completed his Ph.D. at the University of California at Davis in 1973. He is currently with the U.S. Geological Survey at Woods Hole, Massachusetts. Dr. Valentine's research interests include biogeographic, biostratigraphic, and paleoecologic studies of ostracods and calcareous nannofossils. He is currently studying the biostratigraphy and paleoecology of the Cenozoic and Mesozoic deposits of the Atlantic continental margin.



Page C. Valentine

CONSTITUTION AND BY-LAWS

GULF COAST ASSOCIATION OF GEOLOGICAL SOCIETIES

ARTICLE I – Name

This is a non-profit organization and shall be known as the “Gulf Coast Association of Geological Societies.” It is hereinafter referred to as “This Association.”

ARTICLE II – Object

The object of This Association is to provide for discussion and publication of papers on subjects and problems coming within the scope of the Geological profession and with particular emphasis on Gulf Coast geology.

ARTICLE III – Organization

This Association is an organization of AAPG-affiliated Geological Societies in the Gulf Coast Area.

SECTION 1.

The business of This Association shall be transacted by an Executive Committee composed of one representative from each member society and the President, Vice President, Secretary, Treasurer, and Past President. The Secretary and Treasurer shall be non-voting members of the Executive Committee. The Vice President, Secretary, and Treasurer shall be elected by the Executive Committee at the annual meeting. The Secretary and Treasurer shall be nominated by the Executive Committee of the local Geological Society next in line to host the annual meeting. The Vice President shall be nominated by the Executive Committee of the host society for the annual meeting two years hence and shall accede to the Presidency. Thus each year the President, Secretary and Treasurer will be from the host society with the Vice President providing continuity with the Executive Committee as he assumes the Presidency in the ensuing year. The duties of these officers shall be those customary to their respective offices.

The GCAGS representative to the Advisory Council of the American Association of Petroleum Geologists shall be selected by the Executive Committee of GCAGS and shall be an ex officio, non-voting member of the GCAGS Executive Committee.

Each member society shall designate a representative to the Executive Committee and in the event the chosen representative cannot attend any given Executive Committee meeting, an alternate representative shall be appointed by the member society to attend and vote in the absence of the representative. The representative, when practicable, shall be an officer or past officer of the society he represents.

Each society shall have one vote on actions taken by the Executive Committee with the exception that the host society, the next annual host society and the immediate past host society will be entitled to two votes by virtue of their members holding the offices of President, Vice President and Past President.

The officers of the Executive Committee shall be elected for a term of one year. They shall be elected and assume their duties as soon after the annual meeting of This Association as is practicable. Any vacancies shall be filled by the Executive Committee as provided above in Paragraph 1.

SECTION 2.

The business of This Association shall be conducted by the Executive Committee. A simple majority vote of the members present at meetings is required to effect decisions, except in those matters which require a greater majority, as set forth in the Constitution and By-Laws.

A quorum shall consist of more than one-half of the voting members of the Executive Committee.

ARTICLE IV – Meetings

SECTION 1.

There shall be an annual meeting of This Association, the time and place of which shall be determined by the Executive Committee.

ARTICLE V – Publications

There shall be an annual *Transactions* published by This Association, which shall contain papers presented at the annual meeting, and such other material as selected by the Executive Committee. The Executive Committee is authorized to have published additional bulletins, and other material which they feel will further the object of This Association.

ARTICLE VI — Funds

The funds of This Association shall be deposited in any national bank or Federally insured Savings and Loan Association selected by the Executive Committee, to the credit of This Association, or invested in U. S. Government Bonds at the discretion of the Executive Committee.

ARTICLE VII — Amendments

Amendments to this Constitution may be proposed by the Executive Committee, or by any two member societies. Proposed amendments shall be submitted to each of the member societies in writing. It shall require an affirmative vote of three-fourths of the member societies to ratify an amendment to this Constitution.

ARTICLE VIII — Later Affiliation

Non-member Geological Societies in the Gulf Coast Area which are affiliated with AAPG may petition the Executive Committee for membership and shall be accepted by an affirmative vote of three-fourths of the Executive Committee.

AMENDMENT I

Any member society may resign from This Association at any time by written notice to the Executive Committee. There shall be no obligation to transfer to such resigning society any portion of This Association's funds.

AMENDMENT II

This Association shall terminate at such time as a majority of the member societies shall so vote. Upon dissolution all funds and other property shall be divided equally among the member societies.

BY-LAWS

I. COMMITTEES:

The President, with the approval of the Executive Committee, shall appoint the Annual Meeting Chairman, and the following permanent committees:

- A. Publications
- B. Advertising
- C. Publicity

Appointment to these committees shall be for a term of one year.

1. Annual Meeting Chairman

The Annual Meeting Chairman shall direct the staging of the annual meeting, and shall have the authority to appoint such additional committees as he deems necessary.

2. Publications

The Publications Committee shall be responsible for obtaining papers for presentation at the annual meeting, and for editing and publishing the annual *Transactions*. It shall endeavor to stimulate geologists in the Gulf Coast to prepare papers which can be collected and published in the *Transactions*, symposium or other form in order to further the object of This Association as set forth in Article II of the Constitution. This committee shall be composed of one member from each of the affiliated societies.

3. Advertising

The Advertising Committee shall be responsible for obtaining advertisements in the publications of This Association, as directed by the Executive Committee. This committee shall be composed of one member from each of the member societies.

4. Publicity

The Publicity Committee shall be responsible for obtaining maximum national and local publicity of the activities of This Association. Also it shall be the responsibility of this committee to stimulate interest and participation in association affairs. The Executive Committee, shall function as the Publicity Committee.

The President, with the approval of the Executive Committee, may appoint such additional committees as are necessary to conduct the business of This Association.

II. TREASURER:

The Treasurer shall have the authority to issue checks against the Bank account of This Association on his sole signature, but in the event of his absence or incapacity to act, withdrawals or payments by check may be made on the signature of the President during the continuance of the absence, or incapacity, of the Treasurer. In this event, the identity and authority of the President, and the circumstances relating to the absence or incapacity of the Treasurer shall be certified by the Executive Committee, if so required by the depository. The Treasurer shall submit a financial report at each meeting of the Executive Committee and shall keep a set of books in accordance with good accounting practices. He shall submit the books for auditing at the end of his term of office.

The Treasurer shall keep an inventory, and storage record, of back publications and equipment owned by This Association. The office of Treasurer shall be bonded as directed by the Executive Committee.

III. These By-Laws may be amended by an affirmative vote of three-fourths of the Executive Committee.

IV. There shall be no dues.

PUBLICATIONS OF THE GULF COAST ASSOCIATION OF GEOLOGICAL SOCIETIES

Following is a list of available publications of the GCAGS. They may be ordered from Cambre Geological Services, Inc., 1809 Louisiana St., Houston, Texas 77002.

TRANSACTIONS

*Volume 1 (1951) New Orleans	
Volume 2 (1952) Corpus Christi	\$ 7.00
Volume 3 (1953) Shreveport	\$ 7.00
Volume 4 (1954) Houston	\$ 7.00
Volume 5 (1955) Biloxi	\$ 7.00
*Volume 6 (1956) San Antonio	
Volume 7 (1957) New Orleans	\$ 9.00
*Volume 8 (1958) Corpus Christi	
Volume 9 (1959) Houston	\$ 9.00
Volume 10 (1960) Biloxi	\$ 9.00
Volume 11 (1961) San Antonio	\$ 9.00
Volume 12 (1962) New Orleans	\$ 9.00
Volume 13 (1963) Shreveport	\$ 9.00
*Volume 14 (1964) Corpus Christi	
Volume 15 (1965) Houston	\$ 9.00
Volume 16 (1966) Lafayette	\$ 9.00
Volume 17 (1967) San Antonio	\$11.00
Volume 18 (1968) Jackson	\$11.00
Volume 19 (1969) Miami	\$12.00
Volume 20 (1970) Shreveport	\$12.00
Volume 21 (1971) New Orleans	\$13.00
Volume 22 (1972) Corpus Christi	\$13.00
Volume 23 (1973) Houston	\$13.00
Volume 24 (1974) Lafayette	\$15.00
Volume 25 (1975) Jackson	\$17.50
Volume 26 (1976) Shreveport	\$17.50
Index (1951-65) Comprehensive Index of GCAGS	
Publications	\$ 1.50
Bibliography of Gulf Coast Geology (1970) 2 vol. set	\$ 9.50
Fault and Salt Map of South Louisiana 52" x 106" edited by	
M. E. Wallace, Jr. (1966)	folded \$ 8.00
	rolled \$ 9.00
Bathymetry of the Gulf of Mexico, Map by	
Elazar Uchupi (1967)	\$ 1.50
Lower Wilcox Depositional System, Texas, Map, pp. 106-107,	
Vol. 17 (1967)	\$ 1.50
Padre Island National Seashore Guidebook (1972)	\$ 4.75

Include Sales Tax -- Texas 5%
 -- Louisiana 5%

All Foreign orders add \$1.00/volume

ALL ORDERS MUST BE PREPAID (EXCEPT STANDING ORDERS)

**Volumes 1, 6, 8 and 14 are out of print.*

Tectonic Map of the Gulf Coast (1972)	(Members) \$7.50
	(Non-members) \$9.00

Order Tectonic Map from AAPG, P. O. Box 979, Tulsa, Oklahoma 74101

**PUBLICATIONS
OF THE
GULF COAST SECTION—SEPM**

Type Localities of the Gulf Coast

Units I, II, and III

Description (each) \$0.50

Field Trip Guidebooks

1961 - Middle Eocene, Houston County, Texas \$1.50
1962 - Little Stave Creek—Salt Mountain Limestone,
Jackson, Alabama out of print
1963 - Guidebook; Stratigraphic Study of Pleistocene to Middle
Eocene, Houston, Texas \$1.50
1969 - Late Cenozoic Stratigraphy of Southwest Florida out of print
1969 - Geologic Guidebook to Neogene Sections in Jamaica, West Indies \$1.00
1973 - Proceedings of Symposium on Calcareous Nannofossils \$3.00

*Order from R. P. Zingula, c/o Exxon Company, USA
Room 2295, P. O. Box 2180
Houston, Texas 77001*

Members are entitled to a 20% discount.
Include Sales Tax—Texas 5%; Louisiana 5%.
All foreign orders, add \$1.00 per volume.